

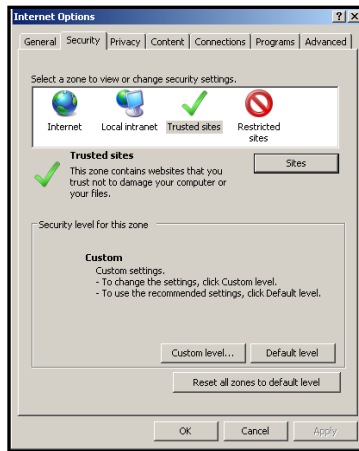
Logging Into the Citrix Environment from Offsite

Internet Explorer Trusted Sites:

Before logging into Citrix, add the following three addresses as “trusted” sites for your internet browser.

The addresses are:

- *.managed.cln
- *.psc.net
- *.pscnow.com



To Access Your Trusted Sites:

1. On your desktop, double-click . The Internet Explorer window displays.
2. From the menu bar, select **Tools >> Options >> Security**



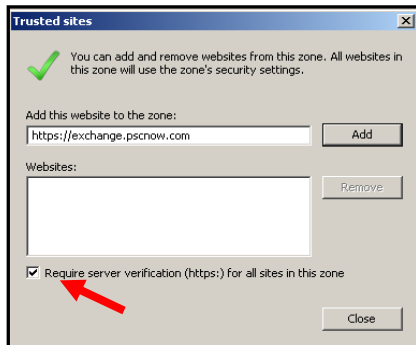
3. Select Sites...
4. Click . The Trusted sites dialog box appears.

Note: If the addresses appear in the list, click .

To Add Addresses to Your Trusted Sites:

1. Key the address into the address field.
2. Click . Repeat this step for each address.

Note: The “Require server verification...” check box field should be empty. If it is not, click on it to remove the check.



3. Click **Close**.

Note: To activate the changes, close your browser window.

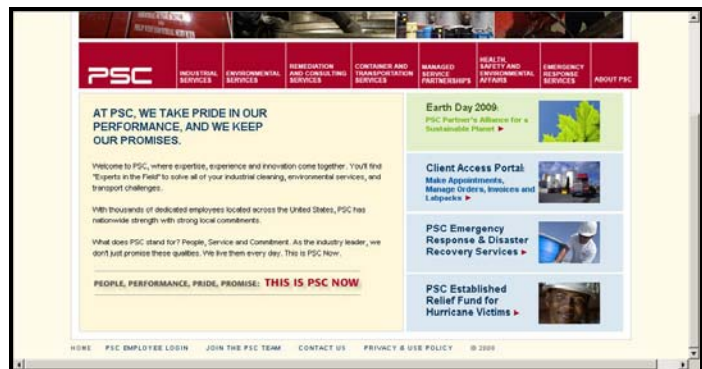
Logging In:

To login to Dallas Citrix Virtual Office (VO):

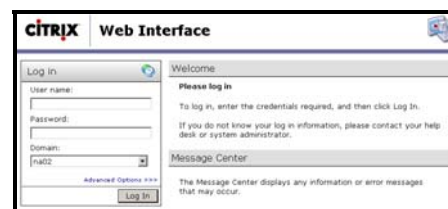
1. On your desktop, double-click . The Internet Explorer window displays.



2. Key the URL www.pscnow.com into the Address field.. The PSC Internet web page displays.



3. Click **PSC EMPLOYEE LOGIN**. The Employee Login page appears.
4. Click **Login to Dallas Virtual Office**. The Citrix Welcome page appears.



5. Enter your **User Name** (this is the same as your Network ID) and **Password** and then click **Log In**. The Citrix Welcome page with your **PSC Applications** displayed.

--	--